

bsm-62811R**[Primary Antibody]****BioSS**
ANTIBODIES

www.bioss.com.cn

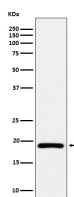
sales@bioss.com.cn

techsupport@bioss.com.cn

400-901-9800

DUT Recombinant Rabbit mAb**— DATASHEET —**

Host: Rabbit	Isotype: IgG	Applications: WB (1:1000-2000) Flow-Cyt (1:50-100) ICC/IF (1:50-200) Reactivity: Human Predicted MW.: 27 Subcellular Location: Cytoplasm ,Nucleus
Clonality: Recombinant		
GeneID: 1854	SWISS: P33316	
Target: DUT		
Immunogen: A synthesized peptide derived from human DUT: 200-252.		
Purification: affinity purified by Protein A		
Storage: 10mM phosphate buffered saline(pH 7.4) with 150mM sodium chloride, 0.05% BSA, 0.02% Proclin300 and 50% glycerol. Store at 4°C for short term. Store at -20°C for long term. Avoid repeated freeze/thaw cycles.		
Background: This enzyme is involved in nucleotide metabolism: it produces dUMP, the immediate precursor of thymidine nucleotides and it decreases the intracellular concentration of dUTP so that uracil cannot be incorporated into DNA.		

— VALIDATION IMAGES —

Western blot analysis of Ramos cell lysate. Using DUT (bsm-62811R) monoclonal antibody at 1:1000 dilution and 4°C overnight incubation. Followed by conjugated secondary antibody incubation at r.t. for 60 min.