

**bsm-62808R**

[ Primary Antibody ]

**Bioss**  
ANTIBODIES

www.bioss.com.cn

sales@bioss.com.cn

techsupport@bioss.com.cn

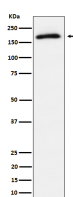
400-901-9800

## Phospho-TBC1D4 (Thr642) Recombinant Rabbit mAb

### DATASHEET

<b>Host:</b> Rabbit	<b>Isotype:</b> IgG	<b>Applications:</b> WB (1:1000-1:2000) <b>Reactivity:</b> Human  <b>Predicted MW.:</b> 147 <b>Subcellular Location:</b> Cytoplasm
<b>Clonality:</b> Recombinant		
<b>GeneID:</b> 9882	<b>SWISS:</b> O60343	
<b>Target:</b> Phospho-TBC1D4 (Thr642)		
<b>Immunogen:</b> A synthesized peptide derived from human AS160 around the phosphorylation site of T642: RAH-pT-FSH.		
<b>Purification:</b> affinity purified by Protein A		
<b>Storage:</b> 10mM phosphate buffered saline(pH 7.4) with 150mM sodium chloride, 0.05% BSA, 0.02% Proclin300 and 50% glycerol. Store at 4°C for short term. Store at -20°C for long term. Avoid repeated freeze/thaw cycles.		
<b>Background:</b> May act as a GTPase-activating protein for RAB2A, RAB8A, RAB10 and RAB14. Isoform 2 promotes insulin-induced glucose transporter SLC2A4/GLUT4 translocation at the plasma membrane, thus increasing glucose uptake.		

### VALIDATION IMAGES



Western blot analysis of 293T treated with insulin cell lysate. Using Phospho-TBC1D4 (Thr642) (bsm-62808R) monoclonal antibody at 1:1000 dilution and 4°C overnight incubation. Followed by conjugated secondary antibody incubation at r.t. for 60 min.