

bsm-62804R**[Primary Antibody]****Lunatic Fringe Recombinant Rabbit mAb****Bioss**
ANTIBODIES

www.bioss.com.cn

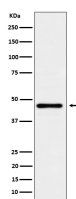
sales@bioss.com.cn

techsupport@bioss.com.cn

400-901-9800

— DATASHEET —

Host: Rabbit	Isotype: IgG	Applications: WB (1:1000-1:2000)
Clonality: Recombinant		Reactivity: Human, Mouse, Rat
GeneID: 3955	SWISS: Q8NES3	
Target: Lunatic Fringe		
Immunogen: A synthesized peptide derived from human LFNG: 350-379.		Predicted MW.: 42
Purification: affinity purified by Protein A		Subcellular Location: Cytoplasm
Storage: 10mM phosphate buffered saline(pH 7.4) with 150mM sodium chloride, 0.05% BSA, 0.02% Proclin300 and 50% glycerol. Store at 4°C for short term. Store at -20°C for long term. Avoid repeated freeze/thaw cycles.		
Background: Glycosyltransferase that initiates the elongation of O-linked fucose residues attached to EGF-like repeats in the extracellular domain of Notch molecules. Modulates NOTCH1 activity by modifying O-fucose residues at specific EGF-like domains resulting in inhibition of NOTCH1 activation by JAG1 and enhancement of NOTCH1 activation by DLL1 via an increase in its binding to DLL1.		

— VALIDATION IMAGES —

Western blot analysis of HeLa cell lysate. Using Lunatic Fringe (bsm-62804R) monoclonal antibody at 1:1000 dilution and 4°C overnight incubation. Followed by conjugated secondary antibody incubation at r.t. for 60 min.