

bsm-62799R**[Primary Antibody]****BioSS**
ANTIBODIES

www.bioss.com.cn

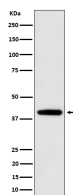
sales@bioss.com.cn

techsupport@bioss.com.cn

400-901-9800

SEC14L2 Recombinant Rabbit mAb**— DATASHEET —**

| | | |
|---|----------------------|---|
| Host: Rabbit | Isotype: IgG | Applications: WB (1:1000-1:2000) IHC-P (1:100-1:200) IHC-F (1:100-1:200) IF (1:100-1:200) Reactivity: Human, Mouse, Rat Predicted MW.: 46 Subcellular Location: Cytoplasm ,Nucleus |
| Clonality: Recombinant | | |
| GeneID: 23541 | SWISS: O76054 | |
| Target: SEC14L2 | | |
| Immunogen: A synthesized peptide derived from human SEC14L2: 250-300. | | |
| Purification: affinity purified by Protein A | | |
| Storage: 10mM phosphate buffered saline(pH 7.4) with 150mM sodium chloride, 0.05% BSA, 0.02% Proclin300 and 50% glycerol. Store at 4°C for short term. Store at -20°C for long term. Avoid repeated freeze/thaw cycles. | | |
| Background: Carrier protein. Binds to some hydrophobic molecules and promotes their transfer between the different cellular sites. Binds with high affinity to alpha-tocopherol. Also binds with a weaker affinity to other tocopherols and to tocotrienols. | | |

— VALIDATION IMAGES —

Western blot analysis of U87-MG cell lysate.
Using SEC14L2 (bsm-62799R) monoclonal antibody at 1:1000 dilution and 4°C overnight incubation. Followed by conjugated secondary antibody incubation at r.t. for 60 min.