

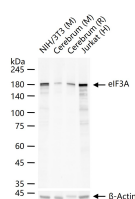
**bsm-62797R****[ Primary Antibody ]****eIF3A Recombinant Rabbit mAb****BioSS**  
**ANTIBODIES**

www.bioss.com.cn

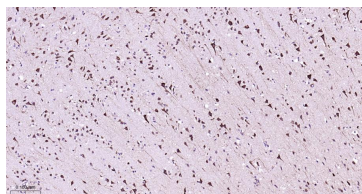
sales@bioss.com.cn

techsupport@bioss.com.cn

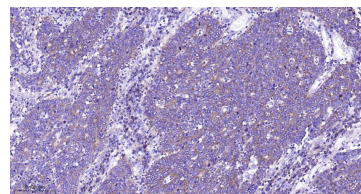
400-901-9800

**— DATASHEET —****Host:** Rabbit**Isotype:** IgG**Clonality:** Recombinant**CloneNo.:** 10F3**GeneID:** 8661**SWISS:** Q14152**Target:** eIF3A**Immunogen:** A synthesized peptide derived from human eIF3A: 1100-1154.**Purification:** affinity purified by Protein A**Storage:** 10mM phosphate buffered saline(pH 7.4) with 150mM sodium chloride, 0.05% BSA, 0.02% Proclin300 and 50% glycerol. Store at 4°C for short term. Store at -20°C for long term. Avoid repeated freeze/thaw cycles.**Background:** Component of the eukaryotic translation initiation factor 3 (eIF-3) complex, which is required for several steps in the initiation of protein synthesis.**Applications:** **WB** (1:500-1:2000)**IHC-P** (1:50-1:200)**IHC-F** (1:50-1:200)**IF** (1:50-1:200)**ICC/IF** (1:50-1:200)**Reactivity:** Human, Mouse, Rat**Predicted  
MW.:** 167**Subcellular  
Location:** Cytoplasm**— VALIDATION IMAGES —**

25 ug total protein per lane of various lysates (see on figure) probed with eIF3A monoclonal antibody, unconjugated (bsm-62797R) at 1:1000 dilution and 4°C overnight incubation. Followed by conjugated secondary antibody incubation at r.t. for 60 min.



Paraformaldehyde-fixed, paraffin embedded Human Brain; Antigen retrieval by boiling in sodium citrate buffer (pH6.0) for 15 min; The section was incubated with eIF3A Monoclonal Antibody, Unconjugated(bsm-62797R) at 1:200 overnight at 4°C, followed by conjugation to the bs-0295G-HRP and DAB (C-0010) staining.



Paraformaldehyde-fixed, paraffin embedded Human colon cancer; Antigen retrieval by boiling in sodium citrate buffer (pH6.0) for 15 min; The section was incubated with eIF3A Monoclonal Antibody, Unconjugated(bsm-62797R) at 1:200 overnight at 4°C, followed by conjugation to the bs-0295G-HRP and DAB (C-0010) staining.