

bsm-62796R**[Primary Antibody]**

www.bioss.com.cn

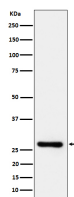
sales@bioss.com.cn

techsupport@bioss.com.cn

400-901-9800

DcR1 Recombinant Rabbit mAb**— DATASHEET —**

Host: Rabbit	Isotype: IgG	Applications: WB (1:1000-1:2000) ICC/IF (1:50-1:200)
Clonality: Recombinant		Reactivity: Human, Mouse, Rat
GeneID: 8794	SWISS: O14798	
Target: DcR1		
Immunogen: A synthesized peptide derived from human DcR1: 150-230.		Predicted MW.: 27
Purification: affinity purified by Protein A		Subcellular Location: Cell membrane
Storage: 10mM phosphate buffered saline(pH 7.4) with 150mM sodium chloride, 0.05% BSA, 0.02% Proclin300 and 50% glycerol. Store at 4°C for short term. Store at -20°C for long term. Avoid repeated freeze/thaw cycles.		
Background: Receptor for the cytotoxic ligand TRAIL. Lacks a cytoplasmic death domain and hence is not capable of inducing apoptosis. May protect cells against TRAIL mediated apoptosis by competing with TRAIL-R1 and R2 for binding to the ligand.		

— VALIDATION IMAGES —

Western blot analysis of Jurkat cell lysate. Using DcR1 (bsm-62796R) monoclonal antibody at 1:1000 dilution and 4°C overnight incubation. Followed by conjugated secondary antibody incubation at r.t. for 60 min.