

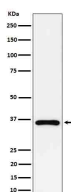
**bsm-62793R****[ Primary Antibody ]**

www.bioss.com.cn

sales@bioss.com.cn

techsupport@bioss.com.cn

400-901-9800

**GAS2 Recombinant Rabbit mAb****— DATASHEET —****Host:** Rabbit**Isotype:** IgG**Clonality:** Recombinant**GeneID:** 2620**SWISS:** O43903**Target:** GAS2**Immunogen:** A synthesized peptide derived from human GAS2: 1-56.**Purification:** affinity purified by Protein A**Storage:** 10mM phosphate buffered saline(pH 7.4) with 150mM sodium chloride, 0.05% BSA, 0.02% Proclin300 and 50% glycerol. Store at 4°C for short term. Store at -20°C for long term. Avoid repeated freeze/thaw cycles.**Background:** May play a role in apoptosis by acting as a cell death substrate for caspases. Is cleaved during apoptosis and the cleaved form induces dramatic rearrangements of the actin cytoskeleton and potent changes in the shape of the affected cells. May be involved in the membrane ruffling process (By similarity).**Applications:** WB (1:1000-1:2000)**IHC-P** (1:100-1:200)**IHC-F** (1:100-1:200)**IF** (1:100-1:200)**Reactivity:** Human**Predicted  
MW.:** 35**Subcellular  
Location:** Cell membrane ,Cytoplasm**— VALIDATION IMAGES —**

Western blot analysis of Jurkat cell lysate. Using GAS2 (bsm-62793R) monoclonal antibody at 1:1000 dilution and 4°C overnight incubation. Followed by conjugated secondary antibody incubation at r.t. for 60 min.