

bsm-62792R**[Primary Antibody]****Bioss**
ANTIBODIES

www.bioss.com.cn

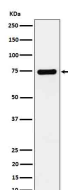
sales@bioss.com.cn

techsupport@bioss.com.cn

400-901-9800

Dopamine beta Hydroxylase Recombinant Rabbit mAb**— DATASHEET —**

Host: Rabbit	Isotype: IgG	Applications: WB (1:1000-2000) IHC-P (1:100-200) IHC-F (1:100-200) IF (1:100-200) Reactivity: Human Predicted MW.: 69 Subcellular Location: Cell membrane ,Cytoplasm
Clonality: Recombinant		
GeneID: 1621	SWISS: P09172	
Target: Dopamine beta Hydroxylase		
Immunogen: A synthesized peptide derived from human Dopamine beta hydroxylase: 100-250.		
Purification: affinity purified by Protein A		
Storage: 10mM phosphate buffered saline(pH 7.4) with 150mM sodium chloride, 0.05% BSA, 0.02% Proclin300 and 50% glycerol. Store at 4°C for short term. Store at -20°C for long term. Avoid repeated freeze/thaw cycles.		
Background: Catalyzes the hydroxylation of dopamine to noradrenaline (also known as norepinephrine), and is thus vital for regulation of these neurotransmitters.		

— VALIDATION IMAGES —

Western blot analysis of SH-SY5Y cell lysate.
Using Dopamine beta Hydroxylase (bsm-62792R)
monoclonal antibody at 1:1000 dilution and 4°C
overnight incubation. Followed by conjugated
secondary antibody incubation at r.t. for 60 min.