

bsm-62789R**[Primary Antibody]****GM-CSFR alpha Recombinant Rabbit mAb****BioSS**
ANTIBODIES

www.bioss.com.cn

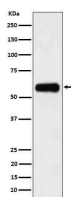
sales@bioss.com.cn

techsupport@bioss.com.cn

400-901-9800

— DATASHEET —

Host: Rabbit	Isotype: IgG	Applications: WB (1:1000-1:2000)
Clonality: Recombinant		Reactivity: Human
GeneID: 1438	SWISS: P15509	
Target: GM-CSFR alpha		
Immunogen: A synthesized peptide derived from human GMR alpha: 23-74.		Predicted MW.: 46
Purification: affinity purified by Protein A		Subcellular Location: Secreted ,Cell membrane
Storage: 10mM phosphate buffered saline(pH 7.4) with 150mM sodium chloride, 0.05% BSA, 0.02% Proclin300 and 50% glycerol. Store at 4°C for short term. Store at -20°C for long term. Avoid repeated freeze/thaw cycles.		
Background: Low affinity receptor for granulocyte-macrophage colony-stimulating factor. Transduces a signal that results in the proliferation, differentiation, and functional activation of hematopoietic cells.		

— VALIDATION IMAGES —

Western blot analysis of 293 cell lysate. Using GM-CSFR alpha (bsm-62789R) monoclonal antibody at 1:1000 dilution and 4°C overnight incubation. Followed by conjugated secondary antibody incubation at r.t. for 60 min.