

**bsm-62786R****[ Primary Antibody ]**

www.bioss.com.cn

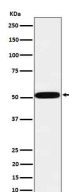
sales@bioss.com.cn

techsupport@bioss.com.cn

400-901-9800

**HTRA1 Recombinant Rabbit mAb****— DATASHEET —**

<b>Host:</b> Rabbit	<b>Isotype:</b> IgG	<b>Applications:</b> <b>WB</b> (1:1000-2000) <b>ICC/IF</b> (1:50-200)
<b>Clonality:</b> Recombinant		<b>Reactivity:</b> Human
<b>GeneID:</b> 5654	<b>SWISS:</b> Q92743	
<b>Target:</b> HTRA1		
<b>Immunogen:</b> A synthesized peptide derived from human Serine protease HTRA1: 350-400.		<b>Predicted MW.:</b> 51
<b>Purification:</b> affinity purified by Protein A		<b>Subcellular Location:</b> Secreted
<b>Storage:</b> 10mM phosphate buffered saline(pH 7.4) with 150mM sodium chloride, 0.05% BSA, 0.02% Proclin300 and 50% glycerol. Store at 4°C for short term. Store at -20°C for long term. Avoid repeated freeze/thaw cycles.		
<b>Background:</b> Serine protease with a variety of targets, including extracellular matrix proteins such as fibronectin. HTRA1-generated fibronectin fragments further induce synovial cells to up-regulate MMP1 and MMP3 production. May also degrade proteoglycans, such as aggrecan, decorin and fibromodulin. Through cleavage of proteoglycans, may release soluble FGF-glycosaminoglycan complexes that promote the range and intensity of FGF signals in the extracellular space.		

**— VALIDATION IMAGES —**

Western blot analysis of MCF7 cell lysate. Using HTRA1 (bsm-62786R) monoclonal antibody at 1:1000 dilution and 4°C overnight incubation. Followed by conjugated secondary antibody incubation at r.t. for 60 min.