

bsm-62785R**[Primary Antibody]**

Cathepsin H Recombinant Rabbit mAb

Bioss
ANTIBODIES

www.bioss.com.cn

sales@bioss.com.cn

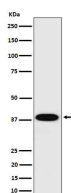
techsupport@bioss.com.cn

400-901-9800

— DATASHEET —

Host: Rabbit	Isotype: IgG	Applications: WB (1:1000-1:2000) IHC-P (1:100-1:200) IHC-F (1:100-1:200) IF (1:50-1:200) Reactivity: Human Predicted MW.: 37 Subcellular Location: Cytoplasm
Clonality: Recombinant		
GeneID: 1512	SWISS: P09668	
Target: Cathepsin H		
Immunogen: A synthesized peptide derived from human Cathepsin H: 150-250.		
Purification: affinity purified by Protein A		
Storage: 10mM phosphate buffered saline(pH 7.4) with 150mM sodium chloride, 0.05% BSA, 0.02% Proclin300 and 50% glycerol. Store at 4°C for short term. Store at -20°C for long term. Avoid repeated freeze/thaw cycles.		
Background: Important for the overall degradation of proteins in lysosomes.		

— VALIDATION IMAGES —



Western blot analysis of HepG2 cell lysate. Using Cathepsin H (bsm-62785R) monoclonal antibody at 1:1000 dilution and 4°C overnight incubation. Followed by conjugated secondary antibody incubation at r.t. for 60 min.