

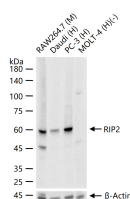
**bsm-62783R****[ Primary Antibody ]****Bioss**  
ANTIBODIES

www.bioss.com.cn

sales@bioss.com.cn

techsupport@bioss.com.cn

400-901-9800

**RIP2 Recombinant Rabbit mAb****— DATASHEET —****Host:** Rabbit**Isotype:** IgG**Clonality:** Recombinant**CloneNo.:** 5G4**GeneID:** 8767**SWISS:** Q43353**Target:** RIP2**Immunogen:** A synthesized peptide derived from human RIP 2: 500-540.**Purification:** affinity purified by Protein A**Storage:** 10mM phosphate buffered saline(pH 7.4) with 150mM sodium chloride, 0.05% BSA, 0.02% Proclin300 and 50% glycerol. Store at 4°C for short term. Store at -20°C for long term. Avoid repeated freeze/thaw cycles.**Background:** Serine/threonine/tyrosine-protein kinase that plays an essential role in modulation of innate and adaptive immune responses. Acts as a key effector of NOD1 and NOD2 signaling pathways: upon activation by bacterial peptidoglycans, NOD1 and NOD2 oligomerize and recruit RIPK2 via CARD-CARD domains, leading to the formation of RIPK2 filaments.**Applications:** WB (1:500-2000)**Reactivity:** Human, Mouse  
(predicted: Rat)**Predicted  
MW.:** 61**Subcellular  
Location:** Cytoplasm**— VALIDATION IMAGES —**

25 ug total protein per lane of various lysates (see on figure) probed with RIP2 monoclonal antibody, unconjugated (bsm-62783R) at 1:2000 dilution and 4°C overnight incubation. Followed by conjugated secondary antibody incubation at r.t. for 60 min.