

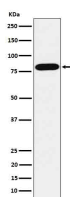
bsm-62780R**[Primary Antibody]****BioSS**
ANTIBODIES

www.bioss.com.cn

sales@bioss.com.cn

techsupport@bioss.com.cn

400-901-9800

ABCD1 Recombinant Rabbit mAb**— DATASHEET —****Host:** Rabbit**Isotype:** IgG**Clonality:** Recombinant**GeneID:** 215**SWISS:** P33897**Target:** ABCD1**Immunogen:** A synthesized peptide derived from human ABCD1: 650-745.**Purification:** affinity purified by Protein A**Storage:** 10mM phosphate buffered saline(pH 7.4) with 150mM sodium chloride, 0.05% BSA, 0.02% Proclin300 and 50% glycerol.
Store at 4°C for short term. Store at -20°C for long term. Avoid repeated freeze/thaw cycles.**Background:** ATP-dependent transporter of the ATP-binding cassette (ABC) family involved in the transport of very long chain fatty acid (VLCFA)-CoA from the cytosol to the peroxisome lumen.**Applications:** **WB** (1:500-1:2000)**ICC/IF** (1:50-1:200)**Reactivity:** Human, Mouse, Rat**Predicted MW.:** 83**— VALIDATION IMAGES —**

Western blot analysis of HepG2 cell lysate. Using ABCD1 (bsm-62780R) monoclonal antibody at 1:1000 dilution and 4°C overnight incubation. Followed by conjugated secondary antibody incubation at r.t. for 60 min.