

**bsm-62772R****[ Primary Antibody ]****BioSS**  
**ANTIBODIES**

www.bioss.com.cn

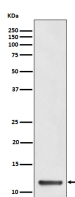
sales@bioss.com.cn

techsupport@bioss.com.cn

400-901-9800

**DYNLT1 Recombinant Rabbit mAb****— DATASHEET —**

<b>Host:</b> Rabbit	<b>Isotype:</b> IgG	<b>Applications:</b> WB (1:500-2000) IHC-P (1:50-200) IHC-F (1:50-200) IF (1:50-200) ICC/IF (1:50-200) IP (1:20-50)  <b>Reactivity:</b> Human, Mouse   <b>Predicted MW.:</b> 12  <b>Subcellular Location:</b> Cytoplasm
<b>Clonality:</b> Recombinant		
<b>GeneID:</b> 6993	<b>SWISS:</b> P63172	
<b>Target:</b> DYNLT1		
<b>Immunogen:</b> A synthesized peptide derived from human DYNLT1: 1-113.		
<b>Purification:</b> affinity purified by Protein A		
<b>Storage:</b> 10mM phosphate buffered saline(pH 7.4) with 150mM sodium chloride, 0.05% BSA, 0.02% Proclin300 and 50% glycerol. Store at 4°C for short term. Store at -20°C for long term. Avoid repeated freeze/thaw cycles.		
<b>Background:</b> Acts as one of several non-catalytic accessory components of the cytoplasmic dynein 1 complex that are thought to be involved in linking dynein to cargos and to adapter proteins that regulate dynein function. Cytoplasmic dynein 1 acts as a motor for the intracellular retrograde motility of vesicles and organelles along microtubules. Binds to transport cargos and is involved in apical cargo transport such as rhodopsin-bearing vesicles in polarized epithelia. May also be a accessory component of axonemal dynein.		

**— VALIDATION IMAGES —**

Western blot analysis of HeLa cell lysate. Using DYNLT1 (bsm-62772R) monoclonal antibody at 1:1000 dilution and 4°C overnight incubation. Followed by conjugated secondary antibody incubation at r.t. for 60 min.