

bsm-62771R**[Primary Antibody]****BioSS**
ANTIBODIES

www.bioss.com.cn

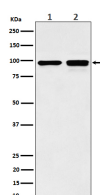
sales@bioss.com.cn

techsupport@bioss.com.cn

400-901-9800

MCM6 Recombinant Rabbit mAb**— DATASHEET —**

Host: Rabbit	Isotype: IgG	Applications: WB (1:1000-1:2000) IHC-P (1:100-1:200) IHC-F (1:100-1:200) IF (1:50-1:200) Flow-Cyt (1:20-1:100) ICC/IF (1:50-1:200) IP (1:20-1:50) Reactivity: Human, Mouse, Rat Predicted MW.: 93 Subcellular Location: Nucleus
Clonality: Recombinant		
GeneID: 4175	SWISS: Q14566	
Target: MCM6		
Immunogen: A synthesized peptide derived from human MCM6: 650-821.		
Purification: affinity purified by Protein A		
Storage: 10mM phosphate buffered saline(pH 7.4) with 150mM sodium chloride, 0.05% BSA, 0.02% Proclin300 and 50% glycerol. Store at 4°C for short term. Store at -20°C for long term. Avoid repeated freeze/thaw cycles.		
Background: Acts as component of the MCM2-7 complex (MCM complex) which is the putative replicative helicase essential for 'once per cell cycle' DNA replication initiation and elongation in eukaryotic cells.		

— VALIDATION IMAGES —

Western blot analysis of (1) MCF7 cell lysate; (2) NIH/3T3 cell lysate. Using MCM6 (bsm-62771R) monoclonal antibody at 1:1000 dilution and 4°C overnight incubation. Followed by conjugated secondary antibody incubation at r.t. for 60 min.