

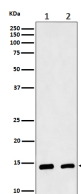
**bsm-62770R****[ Primary Antibody ]****CRABP2 Recombinant Rabbit mAb****Bioss**  
**ANTIBODIES**

www.bioss.com.cn

sales@bioss.com.cn

techsupport@bioss.com.cn

400-901-9800

**— DATASHEET —****Host:** Rabbit**Isotype:** IgG**Clonality:** Recombinant**GeneID:** 1382**SWISS:** P29373**Target:** CRABP2**Immunogen:** A synthesized peptide derived from human CRABP2: 1-138.**Purification:** affinity purified by Protein A**Storage:** 10mM phosphate buffered saline(pH 7.4) with 150mM sodium chloride, 0.05% BSA, 0.02% Proclin300 and 50% glycerol. Store at 4°C for short term. Store at -20°C for long term. Avoid repeated freeze/thaw cycles.**Background:** Transports retinoic acid to the nucleus. Regulates the access of retinoic acid to the nuclear retinoic acid receptors.**Applications:** **WB** (1:1000-1:2000)**IHC-P** (1:100-1:200)**IHC-F** (1:100-1:200)**IF** (1:50-1:200)**Flow-Cyt** (1:20-1:100)**ICC/IF** (1:50-1:200)**Reactivity:** Human, Mouse, Rat**Predicted  
MW.:** 16**Subcellular  
Location:** Cytoplasm ,Nucleus**— VALIDATION IMAGES —**

Western blot analysis of (1) MCF7 cell lysate; (2) Mouse skin lysate. Using CRABP2 (bsm-62770R) monoclonal antibody at 1:1000 dilution and 4°C overnight incubation. Followed by conjugated secondary antibody incubation at r.t. for 60 min.