

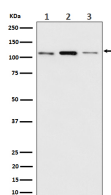
bsm-62769R**[Primary Antibody]****TMEM67/Meckelin Recombinant Rabbit mAb****Bioss**
ANTIBODIES

www.bioss.com.cn

sales@bioss.com.cn

techsupport@bioss.com.cn

400-901-9800

— DATASHEET —**Host:** Rabbit**Isotype:** IgG**Clonality:** Recombinant**GeneID:** 91147**SWISS:** Q5HYA8**Target:** TMEM67/Meckelin**Immunogen:** A synthesized peptide derived from human Meckelin: 801-880.**Purification:** affinity purified by Protein A**Storage:** 10mM phosphate buffered saline(pH 7.4) with 150mM sodium chloride, 0.05% BSA, 0.02% Proclin300 and 50% glycerol. Store at 4°C for short term. Store at -20°C for long term. Avoid repeated freeze/thaw cycles.**Background:** Required for ciliary structure and function. Part of the tectonic-like complex which is required for tissue-specific ciliogenesis and may regulate ciliary membrane composition. Involved in centrosome migration to the apical cell surface during early ciliogenesis. Involved in the regulation of cilia length and appropriate number through the control of centrosome duplication. Is a key regulator of stereociliary bundle orientation.**Applications:** **WB** (1:1000-1:2000)
IHC-P (1:100-1:200)
IHC-F (1:100-1:200)
IF (1:50-1:200)
Flow-Cyt (1:20-1:100)
ICC/IF (1:50-1:200)**Reactivity:** Human, Mouse, Rat**Predicted
MW.:** 112**Subcellular
Location:** Cell membrane**— VALIDATION IMAGES —**

Western blot analysis of (1) MCF7 cell lysate; (2) RAW264.7 cell lysate. (3) C6 cell lysate. Using TMEM67/Meckelin (bsm-62769R) monoclonal antibody at 1:1000 dilution and 4°C overnight incubation. Followed by conjugated secondary antibody incubation at r.t. for 60 min.