

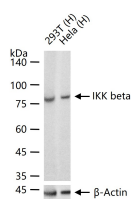
bsm-62768R**[Primary Antibody]****IKK beta Recombinant Rabbit mAb****Bioss**
ANTIBODIES

www.bioss.com.cn

sales@bioss.com.cn

techsupport@bioss.com.cn

400-901-9800

— DATASHEET —**Host:** Rabbit**Isotype:** IgG**Clonality:** Recombinant**CloneNo.:** 18C4**GeneID:** 3551**SWISS:** Q14920**Target:** IKK beta**Immunogen:** A synthesized peptide derived from human IKK beta: 650-700.**Purification:** affinity purified by Protein A**Storage:** 10mM phosphate buffered saline(pH 7.4) with 150mM sodium chloride, 0.05% BSA, 0.02% Proclin300 and 50% glycerol.
Store at 4°C for short term. Store at -20°C for long term. Avoid repeated freeze/thaw cycles.**Background:** DNA damages or other cellular stresses. Acts as a part of the canonical IKK complex in the conventional pathway of NF-kappa-B activation.**Applications:** **WB** (1:500-1:2000)
IP (1:20-1:50)**Reactivity:** Human, Mouse**Predicted**
MW.: 87**Subcellular** Cell membrane ,Cytoplasm
Location: ,Nucleus**— VALIDATION IMAGES —**

25 ug total protein per lane of various lysates (see on figure) probed with IKK beta monoclonal antibody, unconjugated (bsm-62768R) at 1:1000 dilution and 4°C overnight incubation. Followed by conjugated secondary antibody incubation at r.t. for 60 min.