

bsm-62766R**[Primary Antibody]****Serine racemase Recombinant Rabbit mAb****BioSS**
ANTIBODIES

www.bioss.com.cn

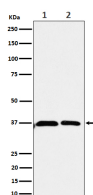
sales@bioss.com.cn

techsupport@bioss.com.cn

400-901-9800

— DATASHEET —

Host: Rabbit	Isotype: IgG	Applications: WB (1:1000-1:2000)
Clonality: Recombinant		Reactivity: Human
GeneID: 63826	SWISS: Q9GZT4	
Target: Serine racemase		
Immunogen: A synthesized peptide derived from human Serine racemase: 31-80.		Predicted MW.: 37
Purification: affinity purified by Protein A		Subcellular Location: Cell membrane
Storage: 10mM phosphate buffered saline(pH 7.4) with 150mM sodium chloride, 0.05% BSA, 0.02% Proclin300 and 50% glycerol. Store at 4°C for short term. Store at -20°C for long term. Avoid repeated freeze/thaw cycles.		
Background: Catalyzes the synthesis of D-serine from L-serine.D-serine is a key coagonist with glutamate at NMDA receptors. Has dehydratase activity towards both L-serine and D-serine.		

— VALIDATION IMAGES —

Western blot analysis of (1) 293 cell lysate; (2) U-87 MG cell lysate. Using Serine racemase (bsm-62766R) monoclonal antibody at 1:1000 dilution and 4°C overnight incubation. Followed by conjugated secondary antibody incubation at r.t. for 60 min.