

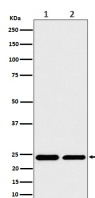
**bsm-62765R****[ Primary Antibody ]****RPS8 Recombinant Rabbit mAb****BioSS**  
**ANTIBODIES**

www.bioss.com.cn

sales@bioss.com.cn

techsupport@bioss.com.cn

400-901-9800

**— DATASHEET —****Host:** Rabbit**Isotype:** IgG**Clonality:** Recombinant**GeneID:** 6202**SWISS:** P62241**Target:** RPS8**Immunogen:** A synthesized peptide derived from human RPS8: 1-208.**Purification:** affinity purified by Protein A**Storage:** 10mM phosphate buffered saline(pH 7.4) with 150mM sodium chloride, 0.05% BSA, 0.02% Proclin300 and 50% glycerol.  
Store at 4°C for short term. Store at -20°C for long term. Avoid repeated freeze/thaw cycles.**Background:** Belongs to the ribosomal protein S8e family.**Applications:** **WB** (1:1000-2000)**Flow-Cyt** (1:50-100)**ICC/IF** (1:50-200)**IP** (1:20-50)**Reactivity:** Human, Mouse, Rat**Predicted  
MW.:** 24**Subcellular  
Location:** Cytoplasm**— VALIDATION IMAGES —**

Western blot analysis of (1) 293 cell lysate; (2) RAW264.7 cell lysate. Using RPS8 (bsm-62765R) monoclonal antibody at 1:1000 dilution and 4°C overnight incubation. Followed by conjugated secondary antibody incubation at r.t. for 60 min.