

**bsm-62764R****[ Primary Antibody ]****IKK alpha/beta Recombinant Rabbit mAb****Bioss**  
**ANTIBODIES**

www.bioss.com.cn

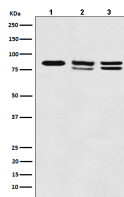
sales@bioss.com.cn

techsupport@bioss.com.cn

400-901-9800

**— DATASHEET —**

<b>Host:</b> Rabbit	<b>Isotype:</b> IgG	<b>Applications:</b> <b>WB</b> (1:500-2000) <b>ICC/IF</b> (1:50-200) <b>IP</b> (1:20-50)  <b>Reactivity:</b> Human, Mouse, Rat  <b>Predicted MW.:</b> 85,87  <b>Subcellular Location:</b> Cell membrane ,Cytoplasm ,Nucleus
<b>Clonality:</b> Recombinant	<b>CloneNo.:</b> 3B12	
<b>GeneID:</b> 3551	<b>SWISS:</b> Q14920	
<b>Target:</b> IKK alpha/beta		
<b>Immunogen:</b> A synthesized peptide derived from human IKK alpha: 450-756.		
<b>Purification:</b> affinity purified by Protein A		
<b>Storage:</b> 10mM phosphate buffered saline(pH 7.4) with 150mM sodium chloride, 0.05% BSA, 0.02% Proclin300 and 50% glycerol. Store at 4°C for short term. Store at -20°C for long term. Avoid repeated freeze/thaw cycles.		
<b>Background:</b> Serine kinase that plays an essential role in the NF-kappa-B signaling pathway which is activated by multiple stimuli such as inflammatory cytokines, bacterial or viral products, DNA damages or other cellular stresses.		

**— VALIDATION IMAGES —**

Western blot analysis of (1) A431 cell lysate; (2) 293T cell lysate; (3) Mouse kidney lysate. Using IKK alpha/beta (bsm-62764R) monoclonal antibody at 1:1000 dilution and 4°C overnight incubation. Followed by conjugated secondary antibody incubation at r.t. for 60 min.

**— SELECTED CITATIONS —**

- **[IF=7]** Baoming Tian. et al. Etiolated-green tea attenuates colonic barrier dysfunction and inflammation in high-fat diet-induced mice by modulating gut microbiota. FOOD RES INT. 2024 Oct;;115192 WB ;Mouse. 39593402