

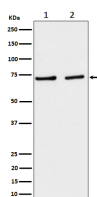
bsm-62762R**[Primary Antibody]****SLC25A12 Recombinant Rabbit mAb****Bioss**
ANTIBODIES

www.bioss.com.cn

sales@bioss.com.cn

techsupport@bioss.com.cn

400-901-9800

— DATASHEET —**Host:** Rabbit**Isotype:** IgG**Clonality:** Recombinant**GeneID:** 8604**SWISS:** O75746**Target:** SLC25A12**Immunogen:** A synthesized peptide derived from human SLC25A12: 601-650.**Purification:** affinity purified by Protein A**Storage:** 10mM phosphate buffered saline(pH 7.4) with 150mM sodium chloride, 0.05% BSA, 0.02% Proclin300 and 50% glycerol. Store at 4°C for short term. Store at -20°C for long term. Avoid repeated freeze/thaw cycles.**Background:** Mitochondrial electrogenic aspartate/glutamate antiporter that favors efflux of aspartate and entry of glutamate and proton within the mitochondria as part of the malate-aspartate shuttle.**Applications:** **WB** (1:1000-2000)
IP (1:20-50)**Reactivity:** Human, Mouse, Rat**Predicted
MW.:** 75**Subcellular
Location:** Cell membrane ,Cytoplasm**— VALIDATION IMAGES —**

Western blot analysis of (1) A431 cell lysate; (2) NIH/3T3 cell lysate. Using SLC25A12 (bsm-62762R) monoclonal antibody at 1:1000 dilution and 4°C overnight incubation. Followed by conjugated secondary antibody incubation at r.t. for 60 min.