

bsm-62760R**[Primary Antibody]****Bioss**
ANTIBODIES

www.bioss.com.cn

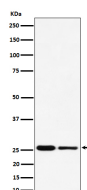
sales@bioss.com.cn

techsupport@bioss.com.cn

400-901-9800

PMF1 Recombinant Rabbit mAb**— DATASHEET —**

Host: Rabbit	Isotype: IgG	Applications: WB (1:1000-2000) IP (1:20-50) Reactivity: Human, Mouse, Rat Predicted MW.: 23 Subcellular Location: Nucleus
Clonality: Recombinant		
GeneID: 100527963	SWISS: Q6P1K2	
Target: PMF1		
Immunogen: A synthesized peptide derived from human Polyamine modulated factor 1: 1-205.		
Purification: affinity purified by Protein A		
Storage: 10mM phosphate buffered saline(pH 7.4) with 150mM sodium chloride, 0.05% BSA, 0.02% Proclin300 and 50% glycerol. Store at 4°C for short term. Store at -20°C for long term. Avoid repeated freeze/thaw cycles.		
Background: Part of the MIS12 complex which is required for normal chromosome alignment and segregation and kinetochore formation during mitosis. May act as a cotranscription partner of NFE2L2 involved in regulation of polyamine-induced transcription of SSAT.		

— VALIDATION IMAGES —

Western blot analysis of (1) HeLa cell lysate; (2) RAW264.7 cell lysate. Using PMF1 (bsm-62760R) monoclonal antibody at 1:1000 dilution and 4°C overnight incubation. Followed by conjugated secondary antibody incubation at r.t. for 60 min.