

**bsm-62751R****[ Primary Antibody ]****BioSS**  
**ANTIBODIES**

www.bioss.com.cn

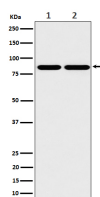
sales@bioss.com.cn

techsupport@bioss.com.cn

400-901-9800

**RASEF Recombinant Rabbit mAb****— DATASHEET —**

<b>Host:</b> Rabbit	<b>Isotype:</b> IgG	<b>Applications:</b> <b>WB</b> (1:1000-2000) <b>Flow-Cyt</b> (1:50-100) <b>ICC/IF</b> (1:50-200)
<b>Clonality:</b> Recombinant		
<b>GeneID:</b> 158158	<b>SWISS:</b> Q8IZ41	
<b>Target:</b> RASEF		<b>Reactivity:</b> Human, Mouse, Rat
<b>Immunogen:</b> A synthesized peptide derived from human RASEF: 82-120.		
<b>Purification:</b> affinity purified by Protein A		
<b>Storage:</b> 10mM phosphate buffered saline(pH 7.4) with 150mM sodium chloride, 0.05% BSA, 0.02% Proclin300 and 50% glycerol. Store at 4°C for short term. Store at -20°C for long term. Avoid repeated freeze/thaw cycles.		
<b>Background:</b> Binds predominantly GDP, and also GTP. Acts as a dynein adapter protein that activates dynein-mediated transport and dynein-dynactin motility on microtubules.		
		<b>Predicted MW.:</b> 83
		<b>Subcellular Location:</b> Cytoplasm

**— VALIDATION IMAGES —**

Western blot analysis of (1) A431 cell lysate; (2) Raw264.7 cell lysate. Using RASEF (bsm-62751R) monoclonal antibody at 1:1000 dilution and 4°C overnight incubation. Followed by conjugated secondary antibody incubation at r.t. for 60 min.