

**bsm-62749R****[ Primary Antibody ]**

www.bioss.com.cn

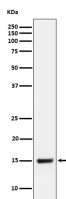
sales@bioss.com.cn

techsupport@bioss.com.cn

400-901-9800

**NDUFB4 Recombinant Rabbit mAb****— DATASHEET —**

<b>Host:</b> Rabbit	<b>Isotype:</b> IgG	<b>Applications:</b> <b>WB</b> (1:1000-1:2000) <b>IHC-P</b> (1:100-1:200) <b>IHC-F</b> (1:100-1:200) <b>IF</b> (1:50-1:200) <b>ICC/IF</b> (1:50-1:200)  <b>Reactivity:</b> Human, Mouse, Rat   <b>Predicted MW.:</b> 15  <b>Subcellular Location:</b> Cytoplasm
<b>Clonality:</b> Recombinant		
<b>GeneID:</b> 4710	<b>SWISS:</b> O95168	
<b>Target:</b> NDUFB4		
<b>Immunogen:</b> A synthesized peptide derived from human NDUFB4: 1-129.		
<b>Purification:</b> affinity purified by Protein A		
<b>Storage:</b> 10mM phosphate buffered saline(pH 7.4) with 150mM sodium chloride, 0.05% BSA, 0.02% Proclin300 and 50% glycerol. Store at 4°C for short term. Store at -20°C for long term. Avoid repeated freeze/thaw cycles.		
<b>Background:</b> Accessory subunit of the mitochondrial membrane respiratory chain NADH dehydrogenase (Complex I), that is believed not to be involved in catalysis. Complex I functions in the transfer of electrons from NADH to the respiratory chain.		

**— VALIDATION IMAGES —**

Western blot analysis of HepG2 cell lysate. Using NDUFB4 (bsm-62749R) monoclonal antibody at 1:1000 dilution and 4°C overnight incubation. Followed by conjugated secondary antibody incubation at r.t. for 60 min.