

bsm-62736R**[Primary Antibody]****Bioss**
ANTIBODIES

www.bioss.com.cn

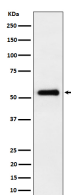
sales@bioss.com.cn

techsupport@bioss.com.cn

400-901-9800

PEPD Recombinant Rabbit mAb**— DATASHEET —**

Host: Rabbit	Isotype: IgG	Applications: WB (1:1000-1:2000)
Clonality: Recombinant		Reactivity: Human
GeneID: 5184	SWISS: P12955	
Target: PEPD		
Immunogen: A synthesized peptide derived from human X Pro dipeptidase: 461-493.		Predicted MW.: 55
Purification: affinity purified by Protein A		Subcellular Location: Extracellular matrix, Nucleus
Storage: 10mM phosphate buffered saline(pH 7.4) with 150mM sodium chloride, 0.05% BSA, 0.02% Proclin300 and 50% glycerol. Store at 4°C for short term. Store at -20°C for long term. Avoid repeated freeze/thaw cycles.		
Background: Dipeptidase that catalyzes the hydrolysis of dipeptides with a prolyl (Xaa-Pro) or hydroxyprolyl residue in the C-terminal position. The preferred dipeptide substrate is Gly-Pro, but other Xaa-Pro dipeptides, such as Ala-Pro, Met-Pro, Phe-Pro, Val-Pro and Leu-Pro, can be cleaved. Plays an important role in collagen metabolism because the high level of iminoacids in collagen.		

— VALIDATION IMAGES —

Western blot analysis of HepG2 cell lysate. Using PEPD (bsm-62736R) monoclonal antibody at 1:1000 dilution and 4°C overnight incubation. Followed by conjugated secondary antibody incubation at r.t. for 60 min.