

**bsm-62734R****[ Primary Antibody ]****BioSS**  
ANTIBODIES

www.bioss.com.cn

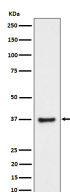
sales@bioss.com.cn

techsupport@bioss.com.cn

400-901-9800

**BCA2 Recombinant Rabbit mAb****— DATASHEET —**

<b>Host:</b> Rabbit	<b>Isotype:</b> IgG	<b>Applications:</b> WB (1:500-2000)
<b>Clonality:</b> Recombinant		<b>Reactivity:</b> Human, Mouse, Rat
<b>GeneID:</b> 27246	<b>SWISS:</b> Q9Y4L5	
<b>Target:</b> BCA2		
<b>Immunogen:</b> A synthesized peptide derived from human RNF115: 271-304.		<b>Predicted MW.:</b> 34
<b>Purification:</b> affinity purified by Protein A		<b>Subcellular Location:</b> Cytoplasm
<b>Storage:</b> 10mM phosphate buffered saline(pH 7.4) with 150mM sodium chloride, 0.05% BSA, 0.02% Proclin300 and 50% glycerol. Store at 4°C for short term. Store at -20°C for long term. Avoid repeated freeze/thaw cycles.		
<b>Background:</b> E3 ubiquitin-protein ligase that catalyzes the 'Lys-48'- and/or 'Lys-63'-linked polyubiquitination of various substrates and thereby plays a role in a number of signaling pathways including autophagy, innate immunity, cell proliferation and cell death.		

**— VALIDATION IMAGES —**

Western blot analysis of PC-3 cell lysate. Using BCA2 (bsm-62734R) monoclonal antibody at 1:1000 dilution and 4°C overnight incubation. Followed by conjugated secondary antibody incubation at r.t. for 60 min.