

bsm-62732R**[Primary Antibody]****BioSS**
ANTIBODIES

www.bioss.com.cn

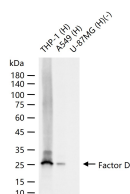
sales@bioss.com.cn

techsupport@bioss.com.cn

400-901-9800

Factor D Recombinant Rabbit mAb**— DATASHEET —**

Host: Rabbit	Isotype: IgG	Applications: WB (1:1000-2000) Reactivity: Human Predicted MW.: 27 Subcellular Location: Secreted
Clonality: Recombinant	CloneNo.: 11C8	
GeneID: 1675	SWISS: P00746	
Target: Factor D		
Immunogen: A synthesized peptide derived from human Complement factor D: 75-225.		
Purification: affinity purified by Protein A		
Storage: 10mM phosphate buffered saline(pH 7.4) with 150mM sodium chloride, 0.05% BSA, 0.02% Proclin300 and 50% glycerol. Store at 4°C for short term. Store at -20°C for long term. Avoid repeated freeze/thaw cycles.		
Background: Factor D cleaves factor B when the latter is complexed with factor C3b, activating the C3bbb complex, which then becomes the C3 convertase of the alternate pathway. Its function is homologous to that of C1s in the classical pathway.		

— VALIDATION IMAGES —

25 ug total protein per lane of various lysates (see on figure) probed with Factor D monoclonal antibody, unconjugated (bsm-62732R) at 1:1000 dilution and 4°C overnight incubation. Followed by conjugated secondary antibody incubation at r.t. for 60 min.