

bsm-62730R

[Primary Antibody]

PGM1 Recombinant Rabbit mAb

Bioss
ANTIBODIES

www.bioss.com.cn

sales@bioss.com.cn

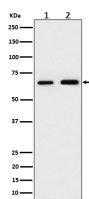
techsupport@bioss.com.cn

400-901-9800

— DATASHEET —

Host: Rabbit	Isotype: IgG	Applications: WB (1:1000-2000) ICC/IF (1:50-200) IP (1:20-50) Reactivity: Human, Mouse, Rat Predicted MW.: 61	
Clonality: Recombinant			
GeneID: 5236	SWISS: P36871		
Target: PGM1			
Immunogen: A synthesized peptide derived from human PGM 1: 530-562.			
Purification: affinity purified by Protein A			
Storage: 10mM phosphate buffered saline(pH 7.4) with 150mM sodium chloride, 0.05% BSA, 0.02% Proclin300 and 50% glycerol. Store at 4°C for short term. Store at -20°C for long term. Avoid repeated freeze/thaw cycles.			
Background: This enzyme participates in both the breakdown and synthesis of glucose.			

— VALIDATION IMAGES —



Western blot analysis of (1) 293 cell lysate; (2) RAW264.7 cell lysate. Using PGM1 (bsm-62730R) monoclonal antibody at 1:1000 dilution and 4°C overnight incubation. Followed by conjugated secondary antibody incubation at r.t. for 60 min.