

bsm-62727R**[Primary Antibody]****Bioss**
ANTIBODIES

www.bioss.com.cn

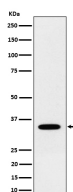
sales@bioss.com.cn

techsupport@bioss.com.cn

400-901-9800

NTH1 Recombinant Rabbit mAb**— DATASHEET —**

Host: Rabbit	Isotype: IgG	Applications: WB (1:1000-1:2000) IHC-P (1:100-1:200) IHC-F (1:100-1:200) IF (1:50-1:200) ICC/IF (1:50-1:200) Reactivity: Human Predicted MW.: 34 Subcellular Location: Nucleus
Clonality: Recombinant		
GeneID: 4913	SWISS: P78549	
Target: NTH1		
Immunogen: A synthesized peptide derived from human NTH1: 1-136.		
Purification: affinity purified by Protein A		
Storage: 10mM phosphate buffered saline(pH 7.4) with 150mM sodium chloride, 0.05% BSA, 0.02% Proclin300 and 50% glycerol. Store at 4°C for short term. Store at -20°C for long term. Avoid repeated freeze/thaw cycles.		
Background: Has both an apurinic and/or apyrimidinic endonuclease activity and a DNA N-glycosylase activity. Incises damaged DNA at cytosines, thymines and guanines. Acts on a damaged strand, 5' from the damaged site. Required for the repair of both oxidative DNA damage and spontaneous mutagenic lesions.		

— VALIDATION IMAGES —

Western blot analysis of 293 cell lysate. Using NTH1 (bsm-62727R) monoclonal antibody at 1:1000 dilution and 4°C overnight incubation. Followed by conjugated secondary antibody incubation at r.t. for 60 min.