

bsm-62720R**[Primary Antibody]****BioSS**
ANTIBODIES

www.bioss.com.cn

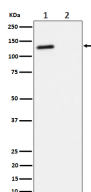
sales@bioss.com.cn

techsupport@bioss.com.cn

400-901-9800

phospho-Rb2 p130 (T986) Recombinant Rabbit mAb**— DATASHEET —**

Host: Rabbit	Isotype: IgG	Applications: WB (1:1000-2000) IP (1:20-50)
Clonality: Recombinant		Reactivity: Human, Mouse
GeneID: 5934	SWISS: Q08999	
Target: Rb2 p130 (T986)		
Immunogen: A synthesized peptide derived from human RBL2 around the phosphorylation site of T986: PP-pT-PT.		Predicted MW.: 128
Purification: affinity purified by Protein A		Subcellular Location: Nucleus
Storage: 10mM phosphate buffered saline(pH 7.4) with 150mM sodium chloride, 0.05% BSA, 0.02% Proclin300 and 50% glycerol. Store at 4°C for short term. Store at -20°C for long term. Avoid repeated freeze/thaw cycles.		
Background: Key regulator of entry into cell division. Directly involved in heterochromatin formation by maintaining overall chromatin structure and, in particular, that of constitutive heterochromatin by stabilizing histone methylation.		

— VALIDATION IMAGES —

Western blot analysis of (1) Jurkat cell lysate; (2) Jurkat cell treated with phosphatase lysate. Using Phospho-Rb2 p130 (T986) (bsm-62720R) monoclonal antibody at 1:1000 dilution and 4°C overnight incubation. Followed by conjugated secondary antibody incubation at r.t. for 60 min.