

**bs-3700R****[ Primary Antibody ]**

**Bioss**  
ANTIBODIES

www.bioss.com.cn

sales@bioss.com.cn

techsupport@bioss.com.cn

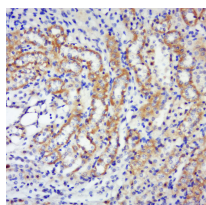
400-901-9800

## phospho-p70 S6 Kinase Beta (Thr444 + Ser447) Rabbit pAb

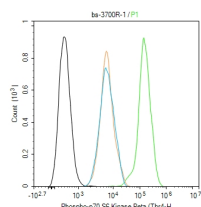
### — DATASHEET —

|  |                      |  |
|--|----------------------|--|
| <b>Host:</b> Rabbit  | <b>Isotype:</b> IgG  | <b>Applications:</b> IHC-P (1:100-500)<br>IHC-F (1:100-500)<br>IF (1:100-500)<br>Flow-Cyt (1ug/Test) |
| <b>Clonality:</b> Polyclonal   |                      |  |
| <b>GeneID:</b> 6199  | <b>SWISS:</b> Q9UBS0 |  |
| <b>Target:</b> p70 S6 Kinase Beta (Thr444 + Ser447)  |                      |  |
| <b>Immunogen:</b> KLH conjugated Synthesised phosphopeptide derived from human RPS6KB2 around the phosphorylation site of Thr444/Ser447: PR(P-T)PV(p-S)PV.   |                      | <b>Reactivity:</b> Human, Rat<br>(predicted: Mouse, Rabbit, Pig, Cow, Chicken, Dog, Horse)           |
| <b>Purification:</b> affinity purified by Protein A  |                      | <b>Predicted MW.:</b> 60 kDa   |
| <b>Concentration:</b> 1mg/ml   |                      | <b>Subcellular Location:</b> Cytoplasm ,Nucleus  |
| <b>Storage:</b> 0.01M TBS (pH7.4) with 1% BSA, 0.02% Proclin300 and 50% Glycerol.<br>Shipped at 4°C. Store at -20°C for one year. Avoid repeated freeze/thaw cycles.   |                      |  |
| <b>Background:</b> This gene encodes a member of the ribosomal S6 kinase family of serine/threonine kinases. The encoded protein responds to mTOR (mammalian target of rapamycin) signaling to promote protein synthesis, cell growth, and cell proliferation. Activity of this gene has been associated with human cancer. Alternatively spliced transcript variants have been observed. The use of alternative translation start sites results in isoforms with longer or shorter N-termini which may differ in their subcellular localizations. There are two pseudogenes for this gene on chromosome 17. [provided by RefSeq, Jan 2013]. |                      |  |

### — VALIDATION IMAGES —



Tissue/cell: Rat kidney tissue; 4% Paraformaldehyde-fixed and paraffin-embedded; Antigen retrieval: citrate buffer (0.01M, pH 6.0), Boiling bathing for 15min; Block endogenous peroxidase by 3% Hydrogen peroxide for 30min; Blocking buffer (normal goat serum, C-0005) at 37°C for 20 min; Incubation: Anti- Phospho-p70 S6 Kinase Beta (Thr444 + Ser447) Polyclonal Antibody, Unconjugated(bs-3700R) 1:400, overnight at 4°C, followed by conjugation to the secondary antibody(SP-0023) and DAB(C-0010) staining



Blank control (black line) :HeLa. Primary Antibody (green line): Rabbit Anti-Phospho-p70 S6 Kinase Beta (Thr444 + Ser447) antibody (bs-3700R) Dilution:1ug/Test; Secondary Antibody (white blue line) : Goat anti-rabbit IgG-AF488 Dilution: 0.5ug/Test. Isotype control (orange line) : Normal Rabbit IgG Protocol The cells were fixed with 4% PFA (10min at room temperature)and then permeabilized with 90% ice-cold methanol for 20 min at -20°C, The cells were then incubated in 5%BSA to block non-specific protein-protein interactions for 30 min at room temperature .Cells stained with Primary Antibody for 30 min at room temperature. The secondary antibody used for 40 min at room temperature. Acquisition of 20,000 events was performed.