

bsm-62713R**[Primary Antibody]****BioSS**
ANTIBODIES

www.bioss.com.cn

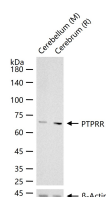
sales@bioss.com.cn

techsupport@bioss.com.cn

400-901-9800

PTPRR Recombinant Rabbit mAb**— DATASHEET —**

Host: Rabbit	Isotype: IgG	Applications: WB (1:500-2000)
Clonality: Recombinant	CloneNo.: 4A12	Reactivity: Mouse, Rat (predicted: Human)
GeneID: 5801	SWISS: Q15256	Predicted MW.: 74
Target: PTPRR		Subcellular Location: Cell membrane ,Cytoplasm
Immunogen: A synthesized peptide derived from human PTPRR: 25-50.		
Purification: affinity purified by Protein A		
Storage: 10mM phosphate buffered saline(pH 7.4) with 150mM sodium chloride, 0.05% BSA, 0.02% Proclin300 and 50% glycerol. Store at 4°C for short term. Store at -20°C for long term. Avoid repeated freeze/thaw cycles.		
Background: Sequesters mitogen-activated protein kinases (MAPKs) such as MAPK1, MAPK3 and MAPK14 in the cytoplasm in an inactive form. The MAPKs bind to a dephosphorylated kinase interacting motif, phosphorylation of which by the protein kinase A complex releases the MAPKs for activation and translocation into the nucleus (By similarity).		

— VALIDATION IMAGES —

25 ug total protein per lane of various lysates (see on figure) probed with PTPRR monoclonal antibody, unconjugated (bsm-62713R) at 1:1000 dilution and 4°C overnight incubation. Followed by conjugated secondary antibody incubation at r.t. for 60 min.