

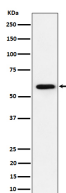
**bsm-62711R****[ Primary Antibody ]****PRPF31 Recombinant Rabbit mAb****Bioss**  
**ANTIBODIES**

www.bioss.com.cn

sales@bioss.com.cn

techsupport@bioss.com.cn

400-901-9800

**— DATASHEET —****Host:** Rabbit**Isotype:** IgG**Clonality:** Recombinant**GeneID:** 26121**SWISS:** Q8WWY3**Target:** PRPF31**Immunogen:** A synthesized peptide derived from human PRPF31: 371-399.**Purification:** affinity purified by Protein A**Storage:** 10mM phosphate buffered saline(pH 7.4) with 150mM sodium chloride, 0.05% BSA, 0.02% Proclin300 and 50% glycerol.  
Store at 4°C for short term. Store at -20°C for long term. Avoid repeated freeze/thaw cycles.**Background:** Involved in pre-mRNA splicing as component of the spliceosome. Required for the assembly of the U4/U5/U6 tri-snRNP complex, one of the building blocks of the spliceosome.**Applications:** **WB** (1:1000-2000)  
**Flow-Cyt** (1:50-100)  
**ICC/IF** (1:50-200)**Reactivity:** Human**Predicted MW.:** 55**— VALIDATION IMAGES —**

Western blot analysis of Jurkat cell lysate. Using PRPF31 (bsm-62711R) monoclonal antibody at 1:1000 dilution and 4°C overnight incubation. Followed by conjugated secondary antibody incubation at r.t. for 60 min.