

**bsm-62710R****[ Primary Antibody ]****GLCNE Recombinant Rabbit mAb****BioSS**  
**ANTIBODIES**

www.bioss.com.cn

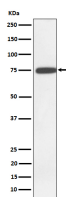
sales@bioss.com.cn

techsupport@bioss.com.cn

400-901-9800

**— DATASHEET —**

<b>Host:</b> Rabbit	<b>Isotype:</b> IgG	<b>Applications:</b> <b>WB</b> (1:1000-1:2000) <b>ICC/IF</b> (1:50-1:200)
<b>Clonality:</b> Recombinant		
<b>GeneID:</b> 10020	<b>SWISS:</b> Q9Y223	<b>Reactivity:</b> Human
<b>Target:</b> GLCNE		
<b>Immunogen:</b> A synthesized peptide derived from human GNE: 701-722.		
<b>Purification:</b> affinity purified by Protein A		<b>Predicted MW.:</b> 79
<b>Storage:</b> 10mM phosphate buffered saline(pH 7.4) with 150mM sodium chloride, 0.05% BSA, 0.02% Proclin300 and 50% glycerol. Store at 4°C for short term. Store at -20°C for long term. Avoid repeated freeze/thaw cycles.		<b>Subcellular Location:</b> Cytoplasm
<b>Background:</b> Bifunctional enzyme that possesses both UDP-N-acetylglucosamine 2-epimerase and N-acetylmannosamine kinase activities, and serves as the initiator of the biosynthetic pathway leading to the production of N-acetylneuraminic acid (NeuAc), a critical precursor in the synthesis of sialic acids. By catalyzing this pivotal and rate-limiting step in sialic acid biosynthesis, this enzyme assumes a pivotal role in governing the regulation of cell surface sialylation.		

**— VALIDATION IMAGES —**

Western blot analysis of K562 cell lysate. Using GLCNE (bsm-62710R) monoclonal antibody at 1:1000 dilution and 4°C overnight incubation. Followed by conjugated secondary antibody incubation at r.t. for 60 min.