

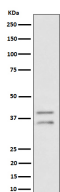
bsm-62709R**[Primary Antibody]****BioSS**
ANTIBODIES

www.bioss.com.cn

sales@bioss.com.cn

techsupport@bioss.com.cn

400-901-9800

UFD1L Recombinant Rabbit mAb**— DATASHEET —****Host:** Rabbit**Isotype:** IgG**Clonality:** Recombinant**GeneID:** 7353**SWISS:** Q92890**Target:** UFD1L**Immunogen:** A synthesized peptide derived from human UFD1: 26-51.**Purification:** affinity purified by Protein A**Storage:** 10mM phosphate buffered saline(pH 7.4) with 150mM sodium chloride, 0.05% BSA, 0.02% Proclin300 and 50% glycerol. Store at 4°C for short term. Store at -20°C for long term. Avoid repeated freeze/thaw cycles.**Background:** Essential component of the ubiquitin-dependent proteolytic pathway which degrades ubiquitin fusion proteins. The ternary complex containing UFD1, VCP and NPLOC4 binds ubiquitinated proteins and is necessary for the export of misfolded proteins from the ER to the cytoplasm, where they are degraded by the proteasome. The NPLOC4-UFD1-VCP complex regulates spindle disassembly at the end of mitosis and is necessary for the formation of a closed nuclear envelope.**Applications:** WB (1:1000-1:2000)**Flow-Cyt** (1:20-1:100)**ICC/IF** (1:50-1:200)**Reactivity:** Human, Mouse, Rat**Predicted
MW.:** 35**Subcellular
Location:** Cytoplasm ,Nucleus**— VALIDATION IMAGES —**

Western blot analysis of HeLa cell lysate. Using UFD1L (bsm-62709R) monoclonal antibody at 1:1000 dilution and 4°C overnight incubation. Followed by conjugated secondary antibody incubation at r.t. for 60 min.