

bsm-62706R

[Primary Antibody]

BioSS
ANTIBODIES

www.bioss.com.cn

sales@bioss.com.cn

techsupport@bioss.com.cn

400-901-9800

IFT88 Recombinant Rabbit mAb

— DATASHEET —

Host: Rabbit

Clonality: Recombinant

GeneID: 8100

Target: IFT88

Isotype: IgG

CloneNo.: 4A12

SWISS: Q13099

Applications: WB (1:500-2000)

IHC-P (1:100-500)

IHC-F (1:100-500)

IF (1:100-500)

Reactivity: Human, Mouse, Rat

Immunogen: A synthesized peptide derived from human IFT88: 1-28.

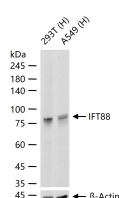
Purification: affinity purified by Protein A

Storage: 10mM phosphate buffered saline(pH 7.4) with 150mM sodium chloride, 0.05% BSA, 0.02% Proclin300 and 50% glycerol. Store at 4°C for short term. Store at -20°C for long term. Avoid repeated freeze/thaw cycles.

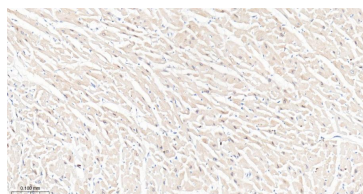
Background: Involved in primary cilium biogenesis.

Predicted MW.: 93

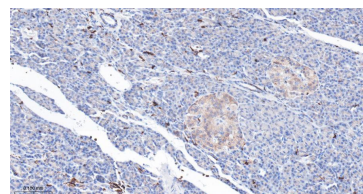
— VALIDATION IMAGES —



25 ug total protein per lane of various lysates (see on figure) probed with IFT88 monoclonal antibody, unconjugated (bsm-62706R) at 1:1000 dilution and 4°C overnight incubation. Followed by conjugated secondary antibody incubation at r.t. for 60 min.



Paraformaldehyde-fixed, paraffin embedded Human Heart; Antigen retrieval by boiling in sodium citrate buffer (pH6.0) for 15 min; Antibody incubation with IFT88 Monoclonal Antibody, Unconjugated(bsm-62706R) at 1:200 overnight at 4°C, followed by conjugation to the bs-0295G-HRP and DAB (C-0010) staining.



Paraformaldehyde-fixed, paraffin embedded Human Pancreas; Antigen retrieval by boiling in sodium citrate buffer (pH6.0) for 15 min; Antibody incubation with IFT88 Monoclonal Antibody, Unconjugated(bsm-62706R) at 1:200 overnight at 4°C, followed by conjugation to the bs-0295G-HRP and DAB (C-0010) staining.