

bsm-62705R**[Primary Antibody]****CECR5 Recombinant Rabbit mAb****BioSS**
ANTIBODIES

www.bioss.com.cn

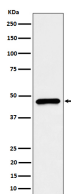
sales@bioss.com.cn

techsupport@bioss.com.cn

400-901-9800

— DATASHEET —

Host: Rabbit	Isotype: IgG	Applications: WB (1:1000-1:2000) ICC/IF (1:50-1:200)
Clonality: Recombinant		Reactivity: Human
GeneID: 27440	SWISS: Q9BXW7	
Target: CECR5		
Immunogen: A synthesized peptide derived from human HDHD5: 370-396.		
Purification: affinity purified by Protein A		Predicted MW.: 46
Storage: 10mM phosphate buffered saline(pH 7.4) with 150mM sodium chloride, 0.05% BSA, 0.02% Proclin300 and 50% glycerol. Store at 4°C for short term. Store at -20°C for long term. Avoid repeated freeze/thaw cycles.		Subcellular Location: Cytoplasm
Background: Candidate gene for the Cat Eye Syndrome (CES), a developmental disorder associated with the duplication of a 2 Mb region of 22q11.2. Duplication usually takes in the form of a surpernumerary bisatellited isodicentric chromosome, resulting in four copies of the region (represents an inv dup22(q11)). CES is characterized clinically by the combination of coloboma of the iris and anal atresia with fistula, downsianting palpebral fissures, preauricular tags and/or pits, frequent occurrence of heart and renal malformations, and normal or near-normal mental development.		

— VALIDATION IMAGES —

Western blot analysis of HepG2 cell lysate. Using CECR5 (bsm-62705R) monoclonal antibody at 1:1000 dilution and 4°C overnight incubation. Followed by conjugated secondary antibody incubation at r.t. for 60 min.