

**bsm-62699R**

[ **Primary Antibody** ]

**Bioss**  
ANTIBODIES

www.bioss.com.cn

sales@bioss.com.cn

techsupport@bioss.com.cn

400-901-9800

## MDH2 Recombinant Rabbit mAb

### — DATASHEET —

**Host:** Rabbit

**Isotype:** IgG

**Clonality:** Recombinant

**GeneID:** 4191

**SWISS:** P40926

**Target:** MDH2

**Immunogen:** A synthesized peptide derived from human MDH2: 101-150.

**Purification:** affinity purified by Protein A

**Storage:** 10mM phosphate buffered saline(pH 7.4) with 150mM sodium chloride, 0.05% BSA, 0.02% Proclin300 and 50% glycerol. Store at 4°C for short term. Store at -20°C for long term. Avoid repeated freeze/thaw cycles.

**Background:** Belongs to the LDH/MDH superfamily. MDH type 1 family.

**Applications:** **WB** (1:1000-2000)

**IHC-P** (1:100-200)

**IHC-F** (1:100-200)

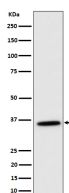
**IF** (1:100-200)

**Reactivity:** Human, Mouse, Rat

**Predicted  
MW.:** 36

**Subcellular  
Location:** Cytoplasm

### — VALIDATION IMAGES —



Western blot analysis of K562 cell lysate. Using MDH2 (bsm-62699R) monoclonal antibody at 1:1000 dilution and 4°C overnight incubation. Followed by conjugated secondary antibody incubation at r.t. for 60 min.