

bsm-62698R**[Primary Antibody]****BioSS**
ANTIBODIES

www.bioss.com.cn

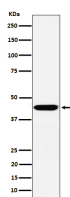
sales@bioss.com.cn

techsupport@bioss.com.cn

400-901-9800

KCTD9 Recombinant Rabbit mAb**— DATASHEET —**

Host: Rabbit	Isotype: IgG	Applications: WB (1:1000-2000) ICC/IF (1:50-200)
Clonality: Recombinant		Reactivity: Human
GeneID: 54793	SWISS: Q7L273	
Target: KCTD9		
Immunogen: A synthesized peptide derived from human KCTD9: 61-85.		Predicted MW.: 43
Purification: affinity purified by Protein A		Subcellular Location: Cytoplasm ,Nucleus
Storage: 10mM phosphate buffered saline(pH 7.4) with 150mM sodium chloride, 0.05% BSA, 0.02% Proclin300 and 50% glycerol. Store at 4°C for short term. Store at -20°C for long term. Avoid repeated freeze/thaw cycles.		
Background: Substrate-specific adapter of a BCR (BTB-CUL3-RBX1) E3 ubiquitin-protein ligase complex, which mediates the ubiquitination of target proteins, leading to their degradation by the proteasome.		

— VALIDATION IMAGES —

Western blot analysis of HepG2 cell lysate. Using KCTD9 (bsm-62698R) monoclonal antibody at 1:1000 dilution and 4°C overnight incubation. Followed by conjugated secondary antibody incubation at r.t. for 60 min.