

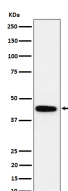
bsm-62697R**[Primary Antibody]****BioSS**
ANTIBODIES

www.bioss.com.cn

sales@bioss.com.cn

techsupport@bioss.com.cn

400-901-9800

GALT Recombinant Rabbit mAb**DATASHEET****Host:** Rabbit**Isotype:** IgG**Clonality:** Recombinant**GeneID:** 2592**SWISS:** P07902**Target:** GALT**Immunogen:** A synthesized peptide derived from human GALT: 50-90.**Purification:** affinity purified by Protein A**Storage:** 10mM phosphate buffered saline(pH 7.4) with 150mM sodium chloride, 0.05% BSA, 0.02% Proclin300 and 50% glycerol.
Store at 4°C for short term. Store at -20°C for long term. Avoid repeated freeze/thaw cycles.**Background:** Plays an important role in galactose metabolism.**Applications:** **WB** (1:1000-2000)
ICC/IF (1:50-200)**Reactivity:** Human, Mouse, Rat**Predicted
MW.:** 43**Subcellular
Location:** Cytoplasm**VALIDATION IMAGES**

Western blot analysis of K562 cell lysate. Using GALT (bsm-62697R) monoclonal antibody at 1:1000 dilution and 4°C overnight incubation. Followed by conjugated secondary antibody incubation at r.t. for 60 min.