

bsm-62696R**[Primary Antibody]****MS4A14 Recombinant Rabbit mAb****BioSS**
ANTIBODIES

www.bioss.com.cn

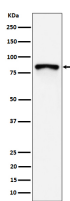
sales@bioss.com.cn

techsupport@bioss.com.cn

400-901-9800

— DATASHEET —

Host: Rabbit	Isotype: IgG	Applications: WB (1:1000-1:2000)
Clonality: Recombinant		Reactivity: Human
GeneID: 84689	SWISS: Q96JA4	
Target: MS4A14		
Immunogen: A synthesized peptide derived from human MS4A14: 150-280.		Predicted MW.: 77
Purification: affinity purified by Protein A		Subcellular Location: Cell membrane
Storage: 10mM phosphate buffered saline(pH 7.4) with 150mM sodium chloride, 0.05% BSA, 0.02% Proclin300 and 50% glycerol. Store at 4°C for short term. Store at -20°C for long term. Avoid repeated freeze/thaw cycles.		
Background: May be involved in signal transduction as a component of a multimeric receptor complex.		

— VALIDATION IMAGES —

Western blot analysis of MCF7 cell lysate. Using MS4A14 (bsm-62696R) monoclonal antibody at 1:1000 dilution and 4°C overnight incubation. Followed by conjugated secondary antibody incubation at r.t. for 60 min.