

**bsm-62693R****[ Primary Antibody ]****BioSS**  
ANTIBODIES

www.bioss.com.cn

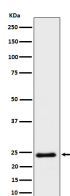
sales@bioss.com.cn

techsupport@bioss.com.cn

400-901-9800

**MRAS Recombinant Rabbit mAb****— DATASHEET —**

<b>Host:</b> Rabbit	<b>Isotype:</b> IgG	<b>Applications:</b> WB (1:1000-1:2000)  <b>Reactivity:</b> Human, Mouse, Rat  <b>Predicted MW.:</b> 24  <b>Subcellular Location:</b> Cell membrane ,Cytoplasm
<b>Clonality:</b> Recombinant	<b>CloneNo.:</b> 6A8	
<b>GeneID:</b> 22808	<b>SWISS:</b> O14807	
<b>Target:</b> MRAS		
<b>Immunogen:</b> A synthesized peptide derived from human MRAS: 177-208.		
<b>Purification:</b> affinity purified by Protein A		
<b>Storage:</b> 10mM phosphate buffered saline(pH 7.4) with 150mM sodium chloride, 0.05% BSA, 0.02% Proclin300 and 50% glycerol. Store at 4°C for short term. Store at -20°C for long term. Avoid repeated freeze/thaw cycles.		
<b>Background:</b> Serves as an important signal transducer for a novel upstream stimuli in controlling cell proliferation. Activates the MAP kinase pathway.		

**— VALIDATION IMAGES —**

Western blot analysis of HeLa cell lysate. Using MRAS (bsm-62693R) monoclonal antibody at 1:1000 dilution and 4°C overnight incubation. Followed by conjugated secondary antibody incubation at r.t. for 60 min.