

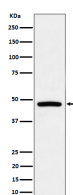
**bsm-62692R****[ Primary Antibody ]****Bioss**  
ANTIBODIES

www.bioss.com.cn

sales@bioss.com.cn

techsupport@bioss.com.cn

400-901-9800

**PREB Recombinant Rabbit mAb****— DATASHEET —****Host:** Rabbit**Isotype:** IgG**Clonality:** Recombinant**GeneID:** 10113**SWISS:** Q9HCU5**Target:** PREB**Immunogen:** A synthesized peptide derived from human PREB: 89-201.**Purification:** affinity purified by Protein A**Storage:** 10mM phosphate buffered saline(pH 7.4) with 150mM sodium chloride, 0.05% BSA, 0.02% Proclin300 and 50% glycerol. Store at 4°C for short term. Store at -20°C for long term. Avoid repeated freeze/thaw cycles.**Background:** Guanine nucleotide exchange factor (GEF) that regulates the assembly of the coat protein complex II/COPII in endoplasmic reticulum (ER) to Golgi vesicle-mediated transport. Selectively activates SAR1A and SAR1B by promoting the exchange of guanosine diphosphate (GDP) for guanosine triphosphate (GTP) in these small GTPases.**Applications:** WB (1:1000-2000)**IHC-P** (1:100-200)**IHC-F** (1:100-200)**IF** (1:50-200)**ICC/IF** (1:50-200)**Reactivity:** Human**Predicted  
MW.:** 45**Subcellular  
Location:** Nucleus**— VALIDATION IMAGES —**

Western blot analysis of Raji cell lysate. Using PREB (bsm-62692R) monoclonal antibody at 1:1000 dilution and 4°C overnight incubation. Followed by conjugated secondary antibody incubation at r.t. for 60 min.