

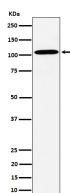
bsm-62686R**[Primary Antibody]****Bioss**
ANTIBODIES

www.bioss.com.cn

sales@bioss.com.cn

techsupport@bioss.com.cn

400-901-9800

USO1 Recombinant Rabbit mAb**— DATASHEET —****Host:** Rabbit**Isotype:** IgG**Clonality:** Recombinant**GeneID:** 8615**SWISS:** O60763**Target:** USO1**Immunogen:** A synthesized peptide derived from human USO1: 1-23.**Purification:** affinity purified by Protein A**Storage:** 10mM phosphate buffered saline(pH 7.4) with 150mM sodium chloride, 0.05% BSA, 0.02% Proclin300 and 50% glycerol. Store at 4°C for short term. Store at -20°C for long term. Avoid repeated freeze/thaw cycles.**Background:** General vesicular transport factor required for intercisternal transport in the Golgi stack; it is required for transcytotic fusion and/or subsequent binding of the vesicles to the target membrane. May well act as a vesicular anchor by interacting with the target membrane and holding the vesicular and target membranes in proximity.**Applications:** WB (1:1000-1:2000)**IHC-P** (1:100-1:200)**IHC-F** (1:100-1:200)**IF** (1:50-1:200)**ICC/IF** (1:50-1:200)**Reactivity:** Human, Mouse, Rat**Predicted
MW.:** 108**Subcellular
Location:** Cell membrane ,Cytoplasm**— VALIDATION IMAGES —**

Western blot analysis of HepG2 cell lysate. Using USO1 (bsm-62686R) monoclonal antibody at 1:1000 dilution and 4°C overnight incubation. Followed by conjugated secondary antibody incubation at r.t. for 60 min.