

bsm-62683R**[Primary Antibody]****BioSS**
ANTIBODIES

www.bioss.com.cn

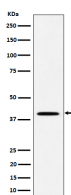
sales@bioss.com.cn

techsupport@bioss.com.cn

400-901-9800

DLX3 Recombinant Rabbit mAb**— DATASHEET —**

Host: Rabbit	Isotype: IgG	Applications: WB (1:1000-2000)
Clonality: Recombinant		Reactivity: Human
GeneID: 1747	SWISS: O60479	
Target: DLX3		
Immunogen: A synthesized peptide derived from human DLX3: 257-287.		Predicted MW.: 32
Purification: affinity purified by Protein A		Subcellular Location: Nucleus
Storage: 10mM phosphate buffered saline(pH 7.4) with 150mM sodium chloride, 0.05% BSA, 0.02% Proclin300 and 50% glycerol. Store at 4°C for short term. Store at -20°C for long term. Avoid repeated freeze/thaw cycles.		
Background: Transcriptional activator. Activates transcription of GNRHR, via binding to the downstream activin regulatory element (DARE) in the gene promoter.		

— VALIDATION IMAGES —

Western blot analysis of JAR cell lysate. Using DLX3 (bsm-62683R) monoclonal antibody at 1:1000 dilution and 4°C overnight incubation. Followed by conjugated secondary antibody incubation at r.t. for 60 min.