

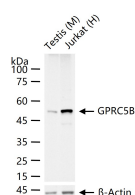
bsm-62681R**[Primary Antibody]****GPRC5B Recombinant Rabbit mAb****BioSS**
ANTIBODIES

www.bioss.com.cn

sales@bioss.com.cn

techsupport@bioss.com.cn

400-901-9800

— DATASHEET —**Host:** Rabbit**Isotype:** IgG**Clonality:** Recombinant**CloneNo.:** 5H9**GeneID:** 51704**SWISS:** Q9NZH0**Target:** GPRC5B**Immunogen:** A synthesized peptide derived from human GPRC5B: 350-403.**Purification:** affinity purified by Protein A**Storage:** 10mM phosphate buffered saline(pH 7.4) with 150mM sodium chloride, 0.05% BSA, 0.02% Proclin300 and 50% glycerol.
Store at 4°C for short term. Store at -20°C for long term. Avoid repeated freeze/thaw cycles.**Background:** G-protein coupled receptor involved in the regulation of cell volume.**Applications:** WB (1:500-2000)**Reactivity:** Human, Mouse**Predicted
MW.:** 45**Subcellular
Location:** Cell membrane ,Cytoplasm**— VALIDATION IMAGES —**

25 ug total protein per lane of various lysates
(see on figure) probed with GPRC5B monoclonal
antibody, unconjugated (bsm-62681R) at 1:1000
dilution and 4°C overnight incubation. Followed
by conjugated secondary antibody incubation at
r.t. for 60 min.