

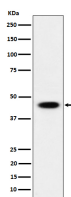
bsm-62680R**[Primary Antibody]****Bioss**
ANTIBODIES

www.bioss.com.cn

sales@bioss.com.cn

techsupport@bioss.com.cn

400-901-9800

AdSS2 Recombinant Rabbit mAb**— DATASHEET —****Host:** Rabbit**Isotype:** IgG**Clonality:** Recombinant**GeneID:** 159**SWISS:** P30520**Target:** AdSS2**Immunogen:** A synthesized peptide derived from human AdSS 2: 1-180.**Purification:** affinity purified by Protein A**Storage:** 10mM phosphate buffered saline(pH 7.4) with 150mM sodium chloride, 0.05% BSA, 0.02% Proclin300 and 50% glycerol.
Store at 4°C for short term. Store at -20°C for long term. Avoid repeated freeze/thaw cycles.**Background:** Plays an important role in the de novo pathway and in the salvage pathway of purine nucleotide biosynthesis. Catalyzes the first committed step in the biosynthesis of AMP from IMP.**Applications:** **WB** (1:1000-1:2000)
Flow-Cyt (1:20-1:100)
ICC/IF (1:50-1:200)**Reactivity:** Human, Mouse, Rat**Predicted MW.:** 50**— VALIDATION IMAGES —**

Western blot analysis of 293 cell lysate. Using AdSS2 (bsm-62680R) monoclonal antibody at 1:1000 dilution and 4°C overnight incubation. Followed by conjugated secondary antibody incubation at r.t. for 60 min.