

**bsm-62679R**

**[ Primary Antibody ]**

## RPL10A Recombinant Rabbit mAb

**BioSS**  
ANTIBODIES

www.bioss.com.cn

sales@bioss.com.cn

techsupport@bioss.com.cn

400-901-9800

### — DATASHEET —

**Host:** Rabbit

**Isotype:** IgG

**Clonality:** Recombinant

**GeneID:** 4736

**SWISS:** P62906

**Target:** RPL10A

**Immunogen:** A synthesized peptide derived from human RPL10A: 1-175.

**Purification:** affinity purified by Protein A

**Storage:** 10mM phosphate buffered saline(pH 7.4) with 150mM sodium chloride, 0.05% BSA, 0.02% Proclin300 and 50% glycerol.  
Store at 4°C for short term. Store at -20°C for long term. Avoid repeated freeze/thaw cycles.

**Background:** Component of the large ribosomal subunit.

**Applications:** **WB** (1:1000-2000)

**IHC-P** (1:100-200)

**IHC-F** (1:100-200)

**IF** (1:50-200)

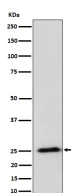
**Flow-Cyt** (1:50-100)

**ICC/IF** (1:50-200)

**Reactivity:** Human, Mouse, Rat

**Predicted MW.:** 25

### — VALIDATION IMAGES —



Western blot analysis of HeLa cell lysate. Using RPL10A (bsm-62679R) monoclonal antibody at 1:1000 dilution and 4°C overnight incubation. Followed by conjugated secondary antibody incubation at r.t. for 60 min.