

**bsm-62674R****[ Primary Antibody ]****Bioss**  
**ANTIBODIES**

www.bioss.com.cn

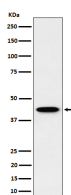
sales@bioss.com.cn

techsupport@bioss.com.cn

400-901-9800

**ITPK1 Recombinant Rabbit mAb****— DATASHEET —**

<b>Host:</b> Rabbit	<b>Isotype:</b> IgG	<b>Applications:</b> <b>WB</b> (1:1000-2000) <b>IHC-P</b> (1:100-200) <b>IHC-F</b> (1:100-200) <b>IF</b> (1:100-200)  <b>Reactivity:</b> Human    <b>Predicted MW.:</b> 46  <b>Subcellular Location:</b> Cell membrane ,Cytoplasm
<b>Clonality:</b> Recombinant		
<b>GeneID:</b> 3705	<b>SWISS:</b> Q13572	
<b>Target:</b> ITPK1		
<b>Immunogen:</b> A synthesized peptide derived from human ITPK1: 362-402.		
<b>Purification:</b> affinity purified by Protein A		
<b>Storage:</b> 10mM phosphate buffered saline(pH 7.4) with 150mM sodium chloride, 0.05% BSA, 0.02% Proclin300 and 50% glycerol. Store at 4°C for short term. Store at -20°C for long term. Avoid repeated freeze/thaw cycles.		
<b>Background:</b> Kinase that can phosphorylate various inositol polyphosphate such as Ins(3,4,5,6)P4 or Ins(1,3,4)P3. Phosphorylates Ins(3,4,5,6)P4 at position 1 to form Ins(1,3,4,5,6)P5.		

**— VALIDATION IMAGES —**

Western blot analysis of HepG2 cell lysate. Using ITPK1 (bsm-62674R) monoclonal antibody at 1:1000 dilution and 4°C overnight incubation. Followed by conjugated secondary antibody incubation at r.t. for 60 min.